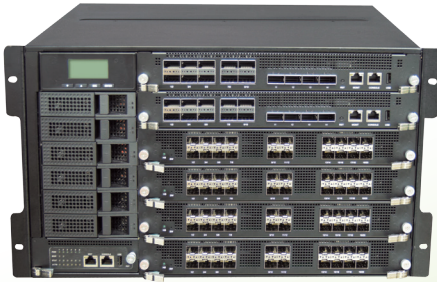


HTCA-6600

High Availability Chassis 6U Telecom Network Appliance with 6 x86 CPU Blades and 6 I/O Blades



■ Features

- High availability, full redundancy and extreme high performance
- 6 CPU blades in the rear, per blade supports up to 2 Intel® Xeon® Processor Scalable Family CPUs and 16x DDR4 R-DIMM
- 6 x Swappable I/O blades on the front, supporting up to 2x Switch blades or 6x Ethernet blades; 6x swappable 3.5" HDD bays
- Blade 1~2: Switch fabric blade or Blade 1~6: Ethernet I/O blade
- NEBS compliant design
- Redundant power supply and removable fan module

■ Preliminary Specifications

Compute Node

CPU Options	Intel® Xeon® Processor Scalable Family
Frequency	Depending on CPU
Core Number	Depending on CPU
BIOS	AMI SPI Flash BIOS
Chipset	Intel C627/C621 Chipset

Memory

Technology	Six-channel DDR4 2666MHz (Registered)
Max. Capacity	512GB (Registered) per M/B tray
Socket	Up to 16 x 288-pin DIMM per M/B tray

Switch Blade

Switch Fabric	Broadcom Tomahawk BCM56960, BCM56770 or Intel Tofino
Speed	100/40/25/10Gbps per port
Interface	6 port 100GbE QSFP28 + 4 40GbE QSFP+ + 6 10GbE SFP+ 2 x 100GbE QSFP28 , 16 x 10/25GbE QSFP +, 4 x 10GbE RJ45 14*100GbE QSFP28

Ethernet Blade

Controller	XL710
Speed	10Gbps
Interface	Up to 20 x SFP+

Storage

Type	SATA III, 6Gb/s per port
Installation	6 x 3.5" or 2.5" swappable drive bays
Type	M.2 2280
Installation	1 x M.2 2280 socket per M/B tray

I/O

Reset Button	Yes
Console	1 x RJ45
USB	1 x type A
IPMI	OPMA socket to support IPMI (IAC-AST2500)

Expansion

PCIe	N/A
PCI	N/A

Cooling

Processor	CPU heatsinks with fan duct
System	5 x hot-swappable cooling fan sets with smart fan control for each computing blade

Environment

Operating/Storage Temperature	0 ~ 40°C /-20 ~ 70°C
Relative Humidity	5% ~ 90%, non-condensing

Miscellaneous

LCD Module	2 x 20 characters
Watchdog	Yes
Internal RTC with Li Battery	Yes

Mechanical

Dimension (W x H x D)	438 x 265.9 x 685.8 mm
Weight	55 kg
Mounting	Rack mount

Power

Type / Watts	AC 1200 watt N+1 Redundant /each DC 1010 watt N+1 Redundant /each PM bus support, up to 5 PSU slots
Input	AC 85~264V DC -36~-72V

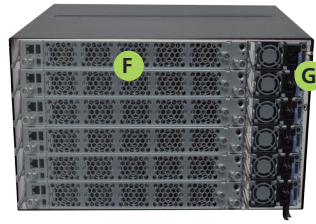
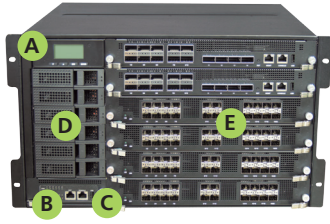
OS Support

Linux	Linux Cent OS 7.2 or above
-------	----------------------------

Certification

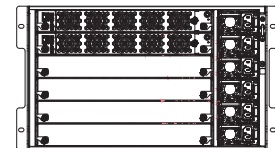
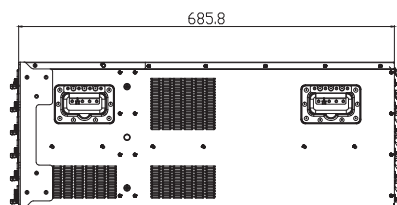
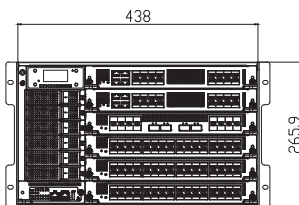
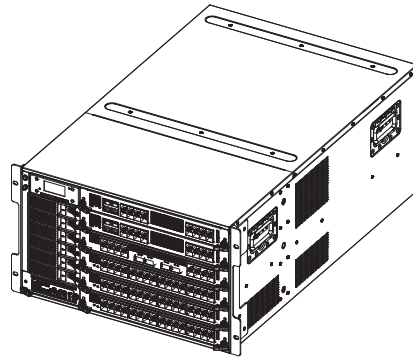
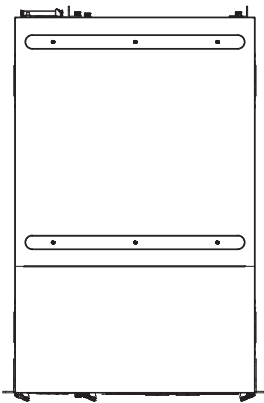
EMC	CE Class A, FCC Class A
-----	-------------------------

Product I/O View



- A** LCM
- B** Console
- C** LOM port
- D** Swappable drive bays
- E** Swappable I/O blades
- F** CPU blades
- G** RPS

Dimensions 438 x 265.9 x 685.8 mm



Ordering Information

HTCA System	HTCA-6600D	HybridTCA™ high-performance chassis 6U telecom network appliance with 6 CPU blades with 12 x Intel® Xeon® Processor Scalable Family + 6 bays for 3.5" HDDs with 6 I/O blades slots
Compute Node	HMB-6110	x86 compute node with 2 x Intel® Xeon® Processor Scalable Family
Ethernet Blade	HLM-1001	20 port 10GbE SFP+ Ethernet network interface blade
Switch Blade	HLM-1021	2 port 100GbE QSFP28 + 16 25/10GbE SFP28 + 4 10GbE RJ45
	HLM-1030	6 port 100GbE QSFP28 + 4 40GbE QSFP+ + 16 10GbE SFP+, IEEE 1588 expansion module (By SKU)
	HLM-1101	14x 100GbE QSFP28 Intel Tofino Programmable Switch Blade for HTCA-6600 Series with Control board(HMB-1010) and 1588 Timing card

V.7-2022, 3, 21

Lanner

© Lanner Electronics Inc. All rights reserved.
 All product specifications are subject to change without notice.
contact@lannerinc.com | www.lannerinc.com